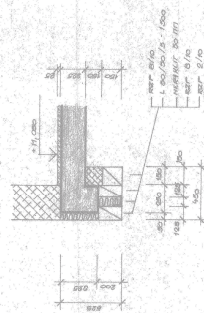
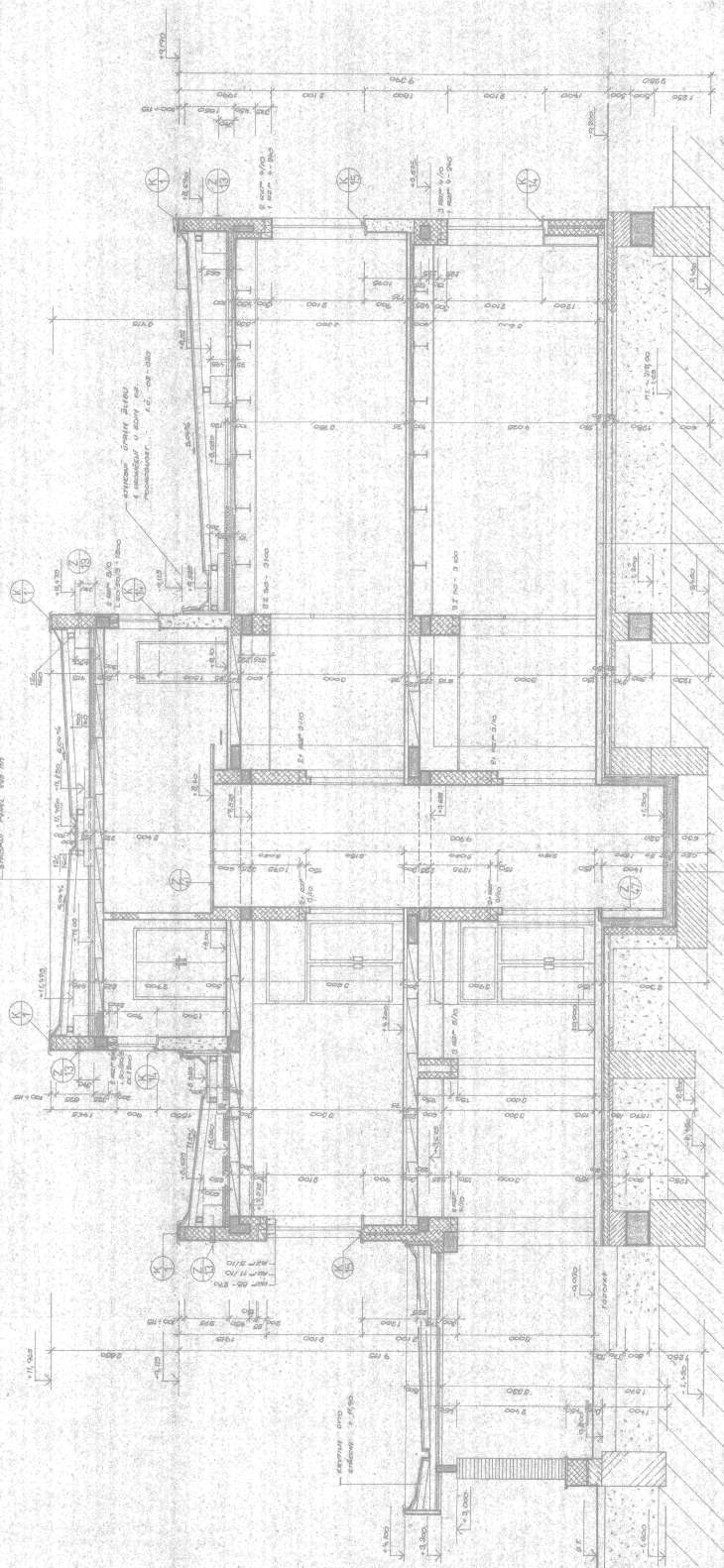


A PODROBNOST NADPRAŽÍ 1:20



± 0,000 = 220,450 m n.m.
výškový systém Jadran

[illegible]

[illegible][illegible]

CONJUGATION MOVERE SO IN
DETERMINED TENSES PRESENT AND PAST
RECOLLECTIVE FORMS SO IN
INDICATIVE IN THE FOUR
PERSONAL PRONOUNS SO IN
RECOLLECTIVE PRESENT AND PAST

$z = 0,000 \Rightarrow 220,450 \text{ mm}$
výškový systém Jadran

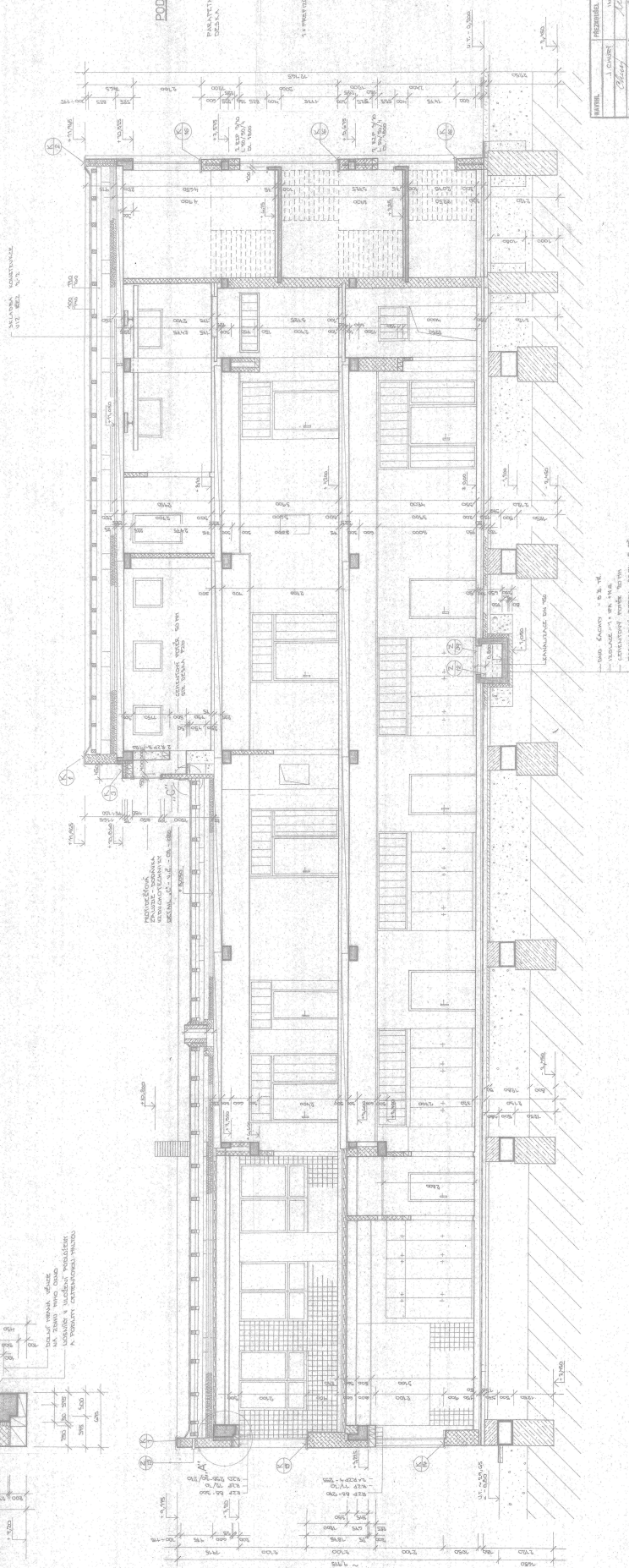
[illegible]

2 82008 - 25021 - E - D-02-009

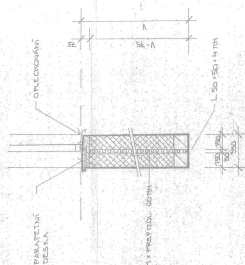
ŘEZ 3-3



...vložení podobně
...podobně vložení podobně



PODROBNOST PARAPETU 1:20



$\pm 0,00 = 220,450 \text{ mm}$.

[illegible]

82008-25021-E-D-02-010